



CENTER FOR  
GLOBAL ENGAGEMENT

*weeks of*

**WELCOME**



**Fall 2017**

New International Undergraduate  
Student Orientation & Programs



# NEW INTERNATIONAL STUDENT GETTING-STARTED CHECKLIST

The Center for Global Engagement (CGE) hosts Weeks of Welcome (WOW) for new international students. Activities include orientation sessions, on- and off-campus tours, as well as social, cultural, and academic programs to assist you as you get to know FSU, the CGE, and Tallahassee. For more details, review the calendar of events and descriptions in the following pages.

## ☐ F-1 STUDENTS — COMPLETE THE ONLINE IMMIGRATION SESSION (OIS)

Watch this brief online presentation on maintaining your F-1 immigration status. You must complete this step or you cannot register for classes. If you did not complete the OIS prior to traveling to the United States, do so now at: [cge.fsu.edu/orientation](http://cge.fsu.edu/orientation).

J-1 students should check with their immigration sponsor regarding orientation.

## ☐ CHECK-IN AT THE CENTER FOR GLOBAL ENGAGEMENT

International Student Check-In is a required step in the immigration process. Come to the CGE during any of the Check-In hours listed on the calendar on pages 6 and 7.

At check-in:

- Report your local address and the emergency contact of a relative or friend (in or outside the U.S.).
- Bring your I-20 or DS-2019, passport with visa, and I-94 printout. J-1 students must also provide proof of insurance.

If you don't have your I-94 Arrival/Departure Record, you can retrieve it online at: [cbp.gov/I94](http://cbp.gov/I94). The I-94 is the official record of your visa status upon entering the U.S. and it will often need to be submitted to benefits providers (such as employers). You should print a copy of your I-94 or save it as a PDF file soon after arrival.

## ☐ ATTEND REQUIRED CGE INTERNATIONAL STUDENT ORIENTATION

Undergraduate students must attend the CGE International Undergraduate Orientation on Wednesday, August 23 (in The Health and Wellness Center, Room 2100). Registration not required.

## ☐ ATTEND OTHER FSU ORIENTATIONS

- Undergraduate first-year and transfer students are required to register for and attend FSU's New Student Orientation, [dos.fsu.edu/nsfp](http://dos.fsu.edu/nsfp).

## ☐ ATTEND CGE WEEKS OF WELCOME PROGRAMMING

All students are invited to the CGE Weeks of Welcome sessions and campus tours! Review the calendar of events and descriptions on the following pages.

Welcome to Tallahassee & Florida State University!  
This checklist will help you get a good start to your first semester.

## ☐ SUBMIT HEALTH COMPLIANCE FORMS TO THE HEALTH & WELLNESS CENTER

If you did not submit them before your arrival, take these forms to University Health Services at the Health and Wellness Center to verify your immunizations. You can download the Health Compliance Forms on the UHS website, [studentinsurance.fsu.edu/immunizations.html](http://studentinsurance.fsu.edu/immunizations.html). If you need immunizations, you can get these at the Health and Wellness Center.

## ☐ PURCHASE HEALTH INSURANCE

You must have adequate health insurance before you can register for classes. If you haven't purchased insurance, you may do so at: [studentinsurance.fsu.edu](http://studentinsurance.fsu.edu).

## ☐ GET YOUR FSU CARD

Go to the FSU Card Center located in the FSU Bookstore. Remember to bring your passport with you to receive the card. With your FSU card as identification, you will be able to ride the bus for free, check out library books, go to the University Health and Wellness Center, use the Leach Recreation Center, attend free concerts and events on campus, and more!

## ☐ EXPLORE YOUR MYFSU ACCOUNT

- Log into your account at [my.fsu.edu](http://my.fsu.edu).
- The "Snapshot" page at log in contains valuable information, including your course schedule, registration holds, and upcoming registration windows.
- You can also access "My Financials" on this screen to see any outstanding balances, as well as other academic information.

## ☐ REGISTER FOR CLASSES

Register for classes during your Open Enrollment dates, which can be found at: [registrar.fsu.edu](http://registrar.fsu.edu). You will not be able to register until all relevant holds have been removed.

## ☐ REPORT YOUR LOCAL ADDRESS ONLINE

If you reported a temporary address to the Center for Global Engagement when you checked in, report your new residential Tallahassee address within 10 days of moving. Visit [cge.fsu.edu](http://cge.fsu.edu) and click the "CGE Forms" button.

## ☐ PAY TUITION & FEES BY DEADLINE

- Pay your tuition after you register for classes and before the posted deadline to avoid class cancellation. The deadline for Fall 2017 is September 8th. For payment methods, go to [studentbusiness.fsu.edu/payments](http://studentbusiness.fsu.edu/payments). Note: You will not receive a bill.
- If you are an agency or government-sponsored student, submit an Agency Billing form to Student Business Services by September 1st to avoid a \$100 late payment fee.



# weeks of welcome

The Center for Global Engagement's Weeks of Welcome (WOW) offer you multiple opportunities to participate in orientation sessions, academic workshops, and social/cultural programs.

We hope the WOW programs and events will provide you with useful information as well as an opportunity to have fun and meet other students from around the world.

Most events take place at the Global & Multicultural Engagement Building (GME), also known as "The Globe," 110 S. Woodward Ave.



## **PLAY CRICKET!** AUG. 12, 8AM / THE GLOBE ENTRANCE

Get your sports gear on! Our international students are organizing a cricket pick-up game along with the Cricket Club of FSU. Meet other international students at The Globe before heading over to the Intramural Grounds of the FSU campus where we will play. There will be a brief introduction to the rules of the game before we play, and all new students are invited to attend. So come one, come all!

## **FSU WOMEN'S SOCCER MATCH** AUG. 18, 6:30PM / THE GLOBE LOBBY

Do you like soccer? Join us as we cheer on the FSU women's soccer team at their first game of the season. This is a great way to make new friends from all over the world and get involved with FSU campus life as well!

## **PLAY SOCCER!** AUG. 23, 5:45PM / THE GLOBE LOBBY

Join other international students for a fun-filled pick-up game of soccer. This is a great opportunity to make new friends at FSU. Please meet us in The Globe Lobby at 5:45pm. We will be heading to the field at 6pm so make sure you arrive on time. You will need appropriate footwear and your FSU ID to be able to participate.

## **FOOTBALL 101** SEPT 1, 5:30PM / THE GLOBE AUDITORIUM

Interested in learning more about American football? Come join the CGE staff for Football 101. Learn the rules of the game, how to get tickets, and get prepared for FSU's first home game on September 9!

## **SOLAR ECLIPSE VIEWING** AUG. 21, 1PM / THE GLOBE LOBBY

This celestial event is a solar eclipse in which the moon passes between the sun and Earth and blocks all or part of the sun for up to about three hours. For this eclipse, the longest period when the moon completely blocks the sun from any given location along the path will be about two minutes and 40 seconds. Tallahassee is set to experience 90 percent totality – the moon disk will cover 90 percent of the sun. *If you are out and about, do not view the eclipse without special protective eclipse glasses.* Please meet in The Globe Lobby and you will ride the bus together with other international students to the main bus station and walk over to the Learning Center to view the eclipse. You can also meet the other international students at the Challenger Learning Center to view the eclipse together.

## **GLOBAL AMBASSADORS PROGRAM (GAP) INFO SESSION** AUG. 25, 4PM / GLOBE ROOM 3500

As a Global Ambassador, you have the opportunity to visit classrooms on campus and in local elementary and high schools and other community organizations. Come to this interest meeting to find out more. (Read about GAP on p. 8.)

## **FSU INVOLVEMENT FAIR** AUG. 29, 5PM / OGLESBY UNION

Want to get involved on campus? The Involvement Fair provides the opportunity to create your FSU experience by connecting you to the hundreds of recognized student organizations and departments.

## **INTERNATIONAL COFFEE HOUR** EVERY FRIDAY, 5-6:30PM / GLOBE LOUNGE & DINING ROOM

An ongoing social and intercultural program that is part of our Weeks of Welcome, but continues throughout the year, is our International Coffee Hour. Coffee Hour takes place every Friday evening from 5-6:30pm in The Globe Dining Room.

## **SEMINOLE SENSATION WEEK EVENTS** SEE CALENDAR ON P. 6 FOR DATES / MEET AT THE GLOBE ENTRANCE

FSU provides fun and exciting programming during the first week of Fall Semester, known as Seminole Sensation Week. Come join other international students as they lead you to different events around the FSU campus during Seminole Sensation Week. Events include video games, sporting events, movies, concerts, food, and more. Please meet the other international students at The Globe Entrance at the start time listed on the calendar, and be sure to arrive on time.

- **August 23, 6:40pm:** Sports and Ice Cream
- **August 23, 8pm:** Guardians of the Galaxy 2 (movie)
- **August 24, 4:30pm:** Traditions Barbeque
- **August 24, 6:40pm:** Tully Gym Sports and Video Games
- **August 24, 8pm:** Activities at the Union
- **August 25, 7pm:** Lego Block Party
- **August 25, 10pm:** Glow in the Dark Cardio Party
- **August 26, 8:30pm:** Glow Noles



# calendar

## August 2017

Sunday	Monday	Tuesday	Wednesday	Thursday	Friday	Saturday
		1	2	3	4 5pm International Coffee Hour	5
6	7	8	9	10	11 9am-1pm F-1 Check-in 5pm International Coffee Hour	12 8am Play Cricket!
13	14 9am-1pm F-1 Check-in	15	16 9am-1pm F-1 Check-in	17	18 9am-1pm F-1 Check-in 5pm International Coffee Hour 6:30pm FSU Soccer Match	19
20	21 9am-1pm F-1 Check-in 1pm Solar Eclipse Viewing	22	23 9am-1pm F-1 Check-in 1pm-5pm CGE Undergrad Orientation 5:45pm Play Soccer! Seminole Sensation Week *SSW events 6:40pm & 8pm	24 Seminole Sensation Week *SSW events at 4:30pm, 6:40pm & 8pm	25 9am-1pm F-1 Check-in 5pm International Coffee Hour Seminole Sensation Week *SSW event 6:30pm & 10pm	26 Seminole Sensation Week *SSW events 8:30pm
27 Seminole Sensation Week	28 FIRST DAY OF CLASSES AT FSU	29	30	31	Sept. 1 5pm International Coffee Hour 5:30pm Football 101	

## IMPORTANT DATES

### august

**Sunday, August 27**

Register by this date to avoid \$100 late fee

**Monday, August 28–  
Thursday, August 31**

Drop/Add Period

### september

**Friday, September 1**

Agency Billing Form Due

**Friday, September 8**

Tuition and Fees Payment Due

## SAVE THE DATES

### september

**Friday, September 29**

International Student Night at the FSU Soccer Match

### november

**November 13-17**

International Education Week





# ongoing cge programs

The mission of the Center for Global Engagement (CGE) is to facilitate international diversity and foster global understanding and awareness within the university community. CGE is committed to enhancing the university's internationalization initiatives through our many ongoing programs.

The CGE hosts intercultural programs and events to promote, support and enhance international education and intercultural exchange at FSU. We organize social events, training opportunities, and campus-wide cultural celebrations. Get involved to make friends, share your culture and engage in our global community.

## **INTERNATIONAL COFFEE HOUR** | FRIDAYS, 5–6:30 PM, GLOBE DINING ROOM

Enjoy refreshments from a specific culture and interact with students and scholars from the U.S. and around the world.

## **GLOBAL CAFÉ** | SELECT FRIDAYS, BEGINS AT 11:30 AM, GLOBE DINING ROOM

Experience a variety of cuisine and cultures from around the world. Student groups and staff prepare food from authentic recipes and serve lunch for just \$7 (drink and dessert included).

◇ September 22 ◇ October 6 ◇ October 21 ◇ November 3

## **English Conversation Club** TBD, Globe Lounge

All levels of speakers of English as a second language are welcome to meet in a relaxed atmosphere to practice conversational English. Groups are led by experienced English tutors. Students, scholars and their families are very welcome. Sessions are free, and it is not necessary to sign up in advance.

## **Global Ambassadors Program (G.A.P.)** Info session: Aug 25, 4–5 PM, Room 3500

Share your culture with groups on campus and in the community. As a Global Ambassador, you have the opportunity to visit classrooms on campus and in local elementary and high schools and other community organizations. The CGE provides the training necessary to help you prepare your presentation. Transportation is always provided.

## **Intercultural Program Series** Select Dates, Globe Auditorium

These programs engage participants in experiential activities significant to the featured country or culture. Participants learn through presentations, performances, hands-on participation, and a sampling of delicious food!

## **Engage Your World Intercultural Dialogue Series**

These lectures and discussions bring together U.S. and international students, faculty, and staff for respectful conversation about the global challenges we all face today.



## **Global Partner Certificate** (Graduate students only)

The Global Partner Certificate is designed for staff, faculty, or FSU graduate students who are committed to understanding and appreciating cultures and who are interested in learning how to better assist international students and scholars at FSU.

## **Global Citizenship Certificate** (Undergraduate students only)

This certificate program is to help undergraduate students maximize the rich cultural learning experiences available to them on campus, in the community, and abroad. Students take two required and two elective academic courses and participate in international and/or cross-cultural experiences and events on campus. The program provides invaluable cross-cultural skills and competencies needed to be a global-ready graduate.

## **International Education Week** November 13-17

International Education Week (IEW) is a national celebration of U.S.-based programs that promote international learning and exchange. During this week, FSU offers a variety of events and activities.

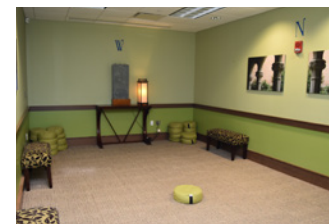
## **International Bazaar** Spring 2018

The International Bazaar, the Center for Global Engagement's largest annual event, is held every spring. The event gives student groups and community organizations the chance to share their history and heritage through cultural displays, performances, and food.

## Special Spaces at The Globe

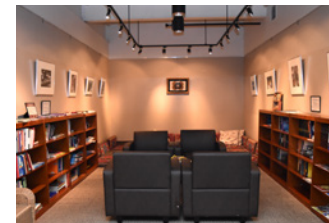
### **Meditation Room**

The Mediation Room is for any member of the FSU community who seeks a quiet place to reflect, pray, or meditate. It is on the third floor of The Globe (no reservation needed).



### **Reflections Reading Room**

The Reflections Reading Room is a comfortable space to read and browse literature on topics such as international education, culture, peace and conflict studies, leadership and service. Book donations are always welcome!



### **Lending Closet**

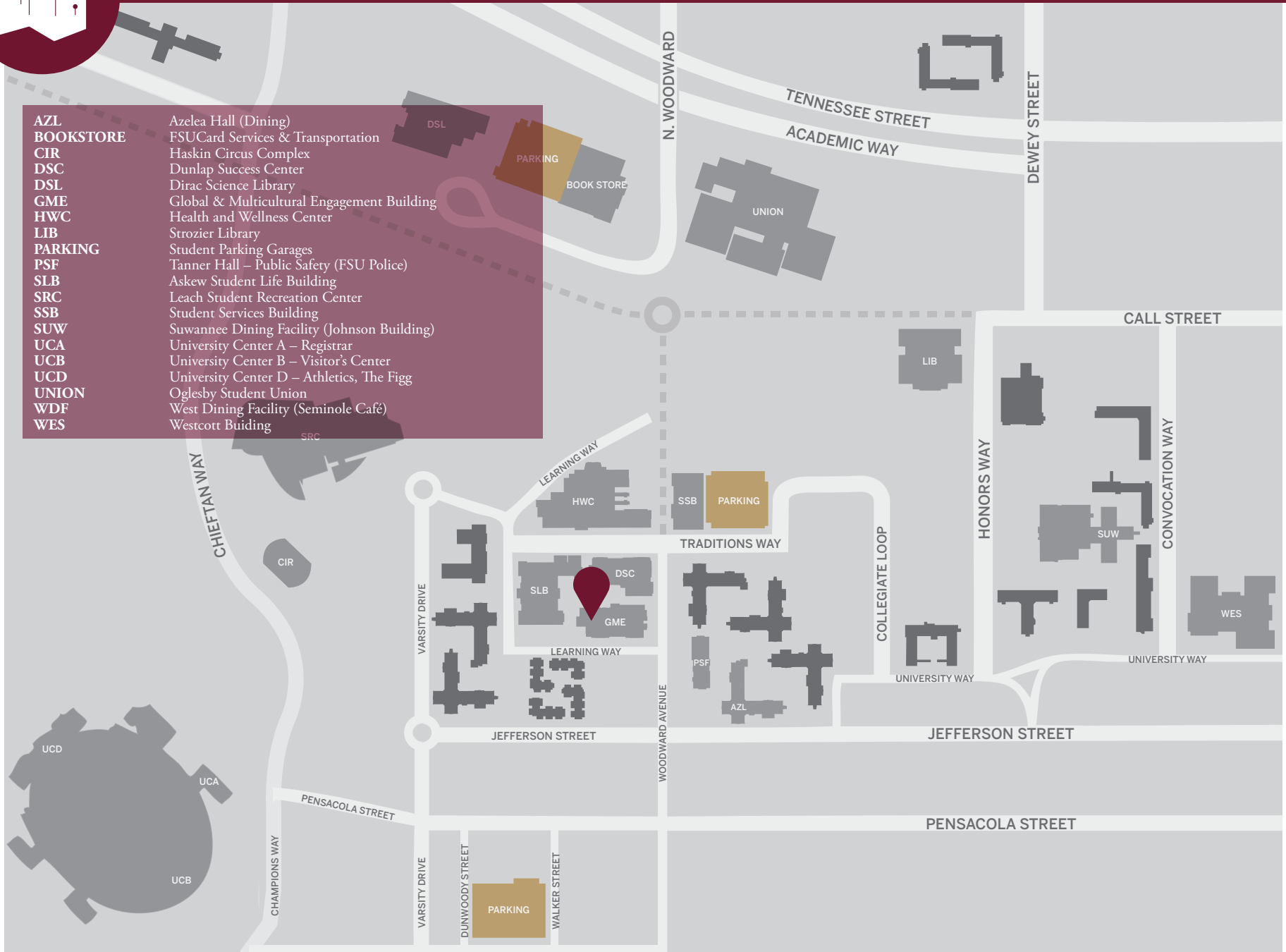
The Lending Closet is available to all FSU international students who would like to borrow or donate household items. It is located in the second floor immigration advising suite.



# campus map

**AZL**  
**BOOKSTORE**  
**CIR**  
**DSC**  
**DSL**  
**GME**  
**HWC**  
**LIB**  
**PARKING**  
**PSF**  
**SLB**  
**SRC**  
**SSB**  
**SUW**  
**UCA**  
**UCB**  
**UCD**  
**UNION**  
**WDF**  
**WES**

Azelea Hall (Dining)  
 FSUCard Services & Transportation  
 Haskin Circus Complex  
 Dunlap Success Center  
 Dirac Science Library  
 Strozier Library  
 Student Parking Garages  
 Tanner Hall – Public Safety (FSU Police)  
 Askew Student Life Building  
 Leach Student Recreation Center  
 Student Services Building  
 Suwannee Dining Facility (Johnson Building)  
 University Center A – Registrar  
 University Center B – Visitor's Center  
 University Center D – Athletics, The Figg  
 Oglesby Student Union  
 West Dining Facility (Seminole Café)  
 Westcott Buiding





## Stay in touch with us during your time at FSU.

Pay attention to immigration updates and reminders that your immigration advisors send via email and through Blackboard. Also look for CGE e-newsletters with information on upcoming events and programs.

Social media is another great way to become part of our CGE community. Keep up-to-date with the latest announcements, see photos from our events, and share posts with your friends.

You can post questions and connect with other new international students on our New to FSU International Students Facebook page: [\*facebook.com/NewFSUInternational\*](https://facebook.com/NewFSUInternational). “Like” the Center for Global Engagement’s main Facebook page and follow us on social media.



## Still have questions?

If you have general questions about campus and Tallahassee, look for student ambassadors at the table in the lobby outside the CGE’s International Student & Scholar Services (ISSS) office or ask the assistant at the ISSS front desk.

