



CENTER FOR
GLOBAL ENGAGEMENT

weeks of

WELCOME



Fall 2017

New International Graduate Student
Orientation & Programs



NEW INTERNATIONAL STUDENT GETTING-STARTED CHECKLIST

Welcome to Tallahassee & Florida State University!

This checklist will help you get a good start to your first semester.

The Center for Global Engagement (CGE) hosts Weeks of Welcome (WOW) for new international students. Activities include orientation sessions, on- and off-campus tours, as well as social, cultural, and academic programs to assist you as you get to know FSU, the CGE, and Tallahassee. For more details, review the calendar of events and descriptions in the following pages.

☐ F-1 STUDENTS — COMPLETE THE ONLINE IMMIGRATION SESSION (OIS)

Watch this brief online presentation on maintaining your F-1 immigration status. You must complete this step or you cannot register for classes. If you did not complete the OIS prior to traveling to the United States, do so now at: cge.fsu.edu/orientation.

J-1 students should check with their immigration sponsor regarding orientation.

☐ CHECK-IN AT THE CENTER FOR GLOBAL ENGAGEMENT

International Student Check-In is a required step in the immigration process. Come to the CGE during any of the Check-In hours listed on the calendar on pages 6 and 7.

At check-in:

- Report your local address and the emergency contact of a relative or friend (in or outside the U.S.).
- Bring your I-20 or DS-2019, passport with visa, and I-94 printout. J-1 students must also provide proof of insurance.

If you don't have your I-94 Arrival/Departure Record, you can retrieve it online at: cbp.gov/I94. The I-94 is the official record of your visa status upon entering the U.S. and it will often need to be submitted to benefits providers (such as employers). You should print a copy of your I-94 or save it as a PDF file soon after arrival.

☐ ATTEND REQUIRED CGE INTERNATIONAL STUDENT ORIENTATION

Graduate students must attend the required CGE International Graduate Orientation on either Friday, August 11 (in The Globe Auditorium) or Friday, August 18 (in The Health and Wellness Center, Room 2100). Register at: cge.fsu.edu/orientation.

☐ ATTEND OTHER FSU ORIENTATIONS

- All graduate students should check with their academic departments for information about department orientations.
- The Graduate School's New Student Orientation is highly recommended. You must register in advance at: gradschool.fsu.edu.
- The Program for Instructional Excellence (PIE) has a training workshop for new graduate teaching assistants (TAs). Register at: pie.fsu.edu. Some departments have their own trainings.

☐ ATTEND CGE WEEKS OF WELCOME PROGRAMMING

All students are invited to the CGE Weeks of Welcome sessions and campus tours! Review the calendar of events and descriptions on the following pages.

☐ SUBMIT HEALTH COMPLIANCE FORMS TO THE HEALTH & WELLNESS CENTER

If you did not submit them before your arrival, take these forms to University Health Services at the Health and Wellness Center to verify your immunizations. You can download the Health Compliance Forms on the UHS website, studentinsurance.fsu.edu/immunizations.html. If you need immunizations, you can get these at the Health and Wellness Center.

☐ PURCHASE HEALTH INSURANCE

You must have adequate health insurance before you can register for classes. If you haven't purchased insurance, you may do so at: studentinsurance.fsu.edu.

☐ GET YOUR FSU CARD

Go to the FSU Card Center located in the FSU Bookstore. Remember to bring your passport with you to receive the card. With your FSU card as identification, you will be able to ride the bus for free, check out library books, go to the University Health and Wellness Center, use the Leach Recreation Center, attend free concerts and events on campus, and more!

☐ EXPLORE YOUR MYFSU ACCOUNT

- Log into your account at my.fsu.edu.
- The "Snapshot" page at log in contains valuable information, including your course schedule, registration holds, and upcoming registration windows.
- You can also access "My Financials" on this screen to see any outstanding balances, as well as other academic information.

☐ REGISTER FOR CLASSES

Register for classes during your Open Enrollment dates, which can be found at: registrar.fsu.edu. You will not be able to register until all relevant hold have been removed.

☐ REPORT YOUR LOCAL ADDRESS ONLINE

If you reported a temporary address to the Center for Global Engagement when you checked in, report your new residential Tallahassee address within 10 days of moving. Visit cge.fsu.edu and click the "CGE Forms" button.

☐ PAY TUITION & FEES BY DEADLINE

- Pay your tuition after you register for classes and before the posted deadline to avoid class cancellation. The deadline for Fall 2017 is September 8th. For payment methods, go to studentbusiness.fsu.edu/payments.
Note: You will not receive a bill.

- If you are an agency or government-sponsored student, submit an Agency Billing form to Student Business Services by September 1st to avoid a \$100 late payment fee.



weeks of welcome

The Center for Global Engagement's Weeks of Welcome (WOW) offer you multiple opportunities to participate in orientation sessions, academic workshops, and social/cultural programs.

We hope the WOW programs and events will provide you with useful information as well as an opportunity to have fun and meet other students from around the world.

Most events take place at the Global & Multicultural Engagement Building (GME), also known as "The Globe," 110 S. Woodward Ave.



CAMPUS TOURS

SEE CALENDAR ON P. 6 FOR DATES / MEET IN THE GLOBE LOBBY

The CGE International Graduate Ambassadors (iGAs) will lead you on a tour around FSU's campus so you can become familiar with your new home and know the best places to study, eat, socialize, and more! Please meet the iGAs at The Globe Lobby at the start time listed on the calendar, and be sure to arrive on time.



PLAY CRICKET!

AUG. 12, 8AM
/ THE GLOBE ENTRANCE

Get your sports gear on! The CGE International Graduate Ambassadors (iGAs) are organizing a cricket pick-up game along with the Cricket Club of FSU. Meet your iGA at The Globe before heading over to the Intramural Grounds of the FSU campus where we will play. There will be a brief introduction to the rules of the game before we play, and all new students are invited to attend. So come one, come all!



LIVING IN THE U.S.

AUG. 17, 12:30PM /
THE GLOBE ROOM 2400

In this discussion-based session, the International Graduate Ambassadors (iGAs) will share their experiences living in Tallahassee. You will have the opportunity to ask questions and engage in conversation about how to make Tallahassee home. Lunch will be provided for the first 50 people who attend, so come join us for this fun, informational session!



FSU WOMEN'S SOCCER MATCH

AUG. 18, 6:30PM
/ THE GLOBE LOBBY

Do you like soccer? Join us as we cheer on the FSU women's soccer team at their first game of the season. This is a great way to make new friends from all over the world and get involved with FSU campus life as well!



TRANSPORTATION SESSIONS

AUG 19, 9:30AM – KING BLDG 3009
AUG 21, 10:30AM – GLOBE RM 2600

In this workshop, we will review the numerous transportation options at FSU and in Tallahassee. You will learn about the best ways to get to and from campus, grocery stores, local parks, and more! The informational session will be followed by an actual bus trip to local stores so that you can learn how to navigate the transportation system with the help of experienced international students.



FSU INVOLVEMENT FAIR

AUG. 29, 5PM / OGLESBY UNION

Want to get involved on campus? The Involvement Fair provides the opportunity to create your FSU experience by connecting you to the hundreds of recognized student organizations and departments.



SOLAR ECLIPSE VIEWING

AUG. 21, 1PM
/ THE GLOBE LOBBY

This celestial event is a solar eclipse in which the moon passes between the sun and Earth and blocks all or part of the sun for up to about three hours. For this eclipse, the longest period when the moon completely blocks the sun from any given location along the path will be about two minutes and 40 seconds. Tallahassee is set to experience 90 percent totality – the moon disk will cover 90 percent of the sun. ***If you are out and about, do not view the eclipse without special protective eclipse glasses.*** Please meet your iGA in The Globe Lobby and you will ride the bus together to the main bus station and walk over to the Learning Center to view the eclipse. You can also meet the iGA at the Challenger Learning Center to view the eclipse together.



PLAY SOCCER!

AUG. 23, 5:45PM
/ THE GLOBE LOBBY

Join the International Graduate Ambassadors (iGAs) for a fun-filled pick-up game of soccer. This is a great opportunity to make new friends at FSU. Please meet your iGA in The Globe Lobby at 5:45pm. We will be heading to the field at 6pm so make sure you arrive on time. You will need appropriate footwear and your FSU ID to be able to participate.



GLOBAL AMBASSADORS PROGRAM (GAP) INFO SESSION

AUG. 25, 4PM / GLOBE ROOM 3500

As a Global Ambassador, you have the opportunity to visit classrooms on campus and in local elementary and high schools and other community organizations. Come to this interest meeting to find out more. (Read about GAP on p. 8.)



INTERNATIONAL COFFEE HOUR

EVERY FRIDAY, 5-6:30PM /
GLOBE LOUNGE & DINING ROOM

An ongoing social and intercultural program that is part of our Weeks of Welcome, but continues throughout the year, is our International Coffee Hour. Coffee Hour takes place every Friday evening from 5-6:30pm in The Globe Dining Room.



SEMINOLE SENSATION WEEK EVENTS

SEE CALENDAR ON P. 6
FOR DATES / MEET AT
THE GLOBE FRONT ENTRANCE

FSU provides fun and exciting programming during the first week of Fall Semester, known as Seminole Sensation Week. Come join the iGAs as they lead you to different events around the FSU campus during Seminole Sensation Week. Events include video games, sporting events, movies, and more. Please meet the iGAs at The Globe at the dates and times listed below. Be sure to arrive on time, and bring your FSU ID.

- **August 23, 6:40pm:** Sports and Ice Cream
- **August 23, 8pm:** Guardians of the Galaxy 2 (movie)
- **August 24, 4:30pm:** Traditions Barbeque
- **August 24, 6:40pm:** Tully Gym Sports and Video Games
- **August 24, 8pm:** Activities at the Union
- **August 25, 7pm:** Lego Block Party
- **August 25, 10pm:** Glow in the Dark Cardio Party
- **August 26, 8:30pm:** Glow Noles



FOOTBALL 101

SEPT 1, 5:30PM
/ THE GLOBE AUDITORIUM

Interested in learning more about American football? Come join the CGE staff for Football 101. Learn the rules of the game, how to get tickets, and get prepared for FSU's first home game on September 9!



calendar

August 2017

Sunday	Monday	Tuesday	Wednesday	Thursday	Friday	Saturday
		1	2	3	4 5pm International Coffee Hour	5
6	7	8	9	10	11 9am-1pm F-1 Check-in 9am Campus Tour (West) 1pm-5pm CGE Grad Orientation 5pm International Coffee Hour	12 8am Play Cricket!
13	14 9am-1pm F-1 Check-in	15 10am Campus Tour (East)	16 9am-1pm F-1 Check-in 9am Campus Tour (West)	17 12:30pm Living in the U.S.	18 9am-1pm F-1 Check-in 1pm-5pm CGE Grad Orientation 5pm International Coffee Hour 6:30pm FSU Soccer Match	19 9:30am Transportation Session 1
20	21 9am-1pm F-1 Check-in 9am Campus Tour (West) 10:30am Transportation Session 2 1pm Solar Eclipse Viewing	22 9am-3pm FSU Grad School Orientation (Register in advance)	23 9am-1pm F-1 Check-in 5:45pm Play Soccer! Seminole Sensation Week *iGA-led SSW events 6:40pm & 8pm	24 10am Campus Tour (East) Seminole Sensation Week *iGA-led SSW events at 4:30pm, 6:40pm & 8pm	25 9am-1pm F-1 Check-in 5pm International Coffee Hour Seminole Sensation Week *iGA-led SSW event 10pm	26 Seminole Sensation Week *iGA-led SSW events 8:30pm
27 Seminole Sensation Week	28 FIRST DAY OF CLASSES AT FSU	29	30	31	Sept. 1 5pm International Coffee Hour 5:30pm Football 101	

IMPORTANT DATES

august

Sunday, August 27

Register by this date to avoid \$100 late fee

**Monday, August 28–
Thursday, August 31**

Drop/Add Period

september

Friday, September 1

Agency Billing Form Due

Friday, September 8

Tuition and Fees Payment Due

SAVE THE DATES

september

Friday, September 29

International Student Night at the FSU Soccer Match

november

November 13-17

International Education Week



ongoing cge programs

The mission of the Center for Global Engagement (CGE) is to facilitate international diversity and foster global understanding and awareness within the university community. CGE is committed to enhancing the university's internationalization initiatives through our many ongoing programs.

The CGE hosts intercultural programs and events to promote, support and enhance international education and intercultural exchange at FSU. We organize social events, training opportunities, and campus-wide cultural celebrations. Get involved to make friends, share your culture and engage in our global community.

INTERNATIONAL COFFEE HOUR | FRIDAYS, 5–6:30 PM, GLOBE DINING ROOM

Enjoy refreshments from a specific culture and interact with students and scholars from the U.S. and around the world.

GLOBAL CAFÉ | SELECT FRIDAYS, BEGINS AT 11:30 AM, GLOBE DINING ROOM

Experience a variety of cuisine and cultures from around the world. Student groups and staff prepare food from authentic recipes and serve lunch for just \$7 (drink and dessert included).

◇ September 22 ◇ October 6 ◇ October 21 ◇ November 3

English Conversation Club TBD, Globe Lounge

All levels of speakers of English as a second language are welcome to meet in a relaxed atmosphere to practice conversational English. Groups are led by experienced English tutors. Students, scholars and their families are very welcome. Sessions are free, and it is not necessary to sign up in advance.

Global Ambassadors Program (G.A.P.) Info session: Aug 25, 4–5 PM, Room 3500

Share your culture with groups on campus and in the community. As a Global Ambassador, you have the opportunity to visit classrooms on campus and in local elementary and high schools and other community organizations. The CGE provides the training necessary to help you prepare your presentation. Transportation is always provided.

Intercultural Program Series Select Dates, Globe Auditorium

These programs engage participants in experiential activities significant to the featured country or culture. Participants learn through presentations, performances, hands-on participation, and a sampling of delicious food!

Engage Your World Intercultural Dialogue Series

These lectures and discussions bring together U.S. and international students, faculty, and staff for respectful conversation about the global challenges we all face today.



Global Partner Certificate (Graduate students only)

The Global Partner Certificate is designed for staff, faculty, or FSU graduate students who are committed to understanding and appreciating cultures and who are interested in learning how to better assist international students and scholars at FSU.

Global Citizenship Certificate (Undergraduate students only)

This certificate program is to help undergraduate students maximize the rich cultural learning experiences available to them on campus, in the community, and abroad. Students take two required and two elective academic courses and participate in international and/or cross-cultural experiences and events on campus. The program provides invaluable cross-cultural skills and competencies needed to be a global-ready graduate.

International Education Week November 13-17

International Education Week (IEW) is a national celebration of U.S.-based programs that promote international learning and exchange. During this week, FSU offers a variety of events and activities.

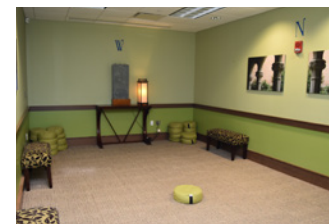
International Bazaar Spring 2018

The International Bazaar, the Center for Global Engagement's largest annual event, is held every spring. The event gives student groups and community organizations the chance to share their history and heritage through cultural displays, performances, and food.

Special Spaces at The Globe

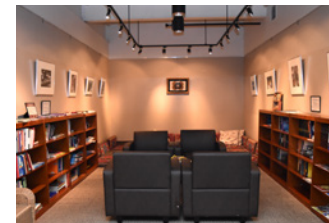
Meditation Room

The Mediation Room is for any member of the FSU community who seeks a quiet place to reflect, pray, or meditate. It is on the third floor of The Globe (no reservation needed).



Reflections Reading Room

The Reflections Reading Room is a comfortable space to read and browse literature on topics such as international education, culture, peace and conflict studies, leadership and service. Book donations are always welcome!



Lending Closet

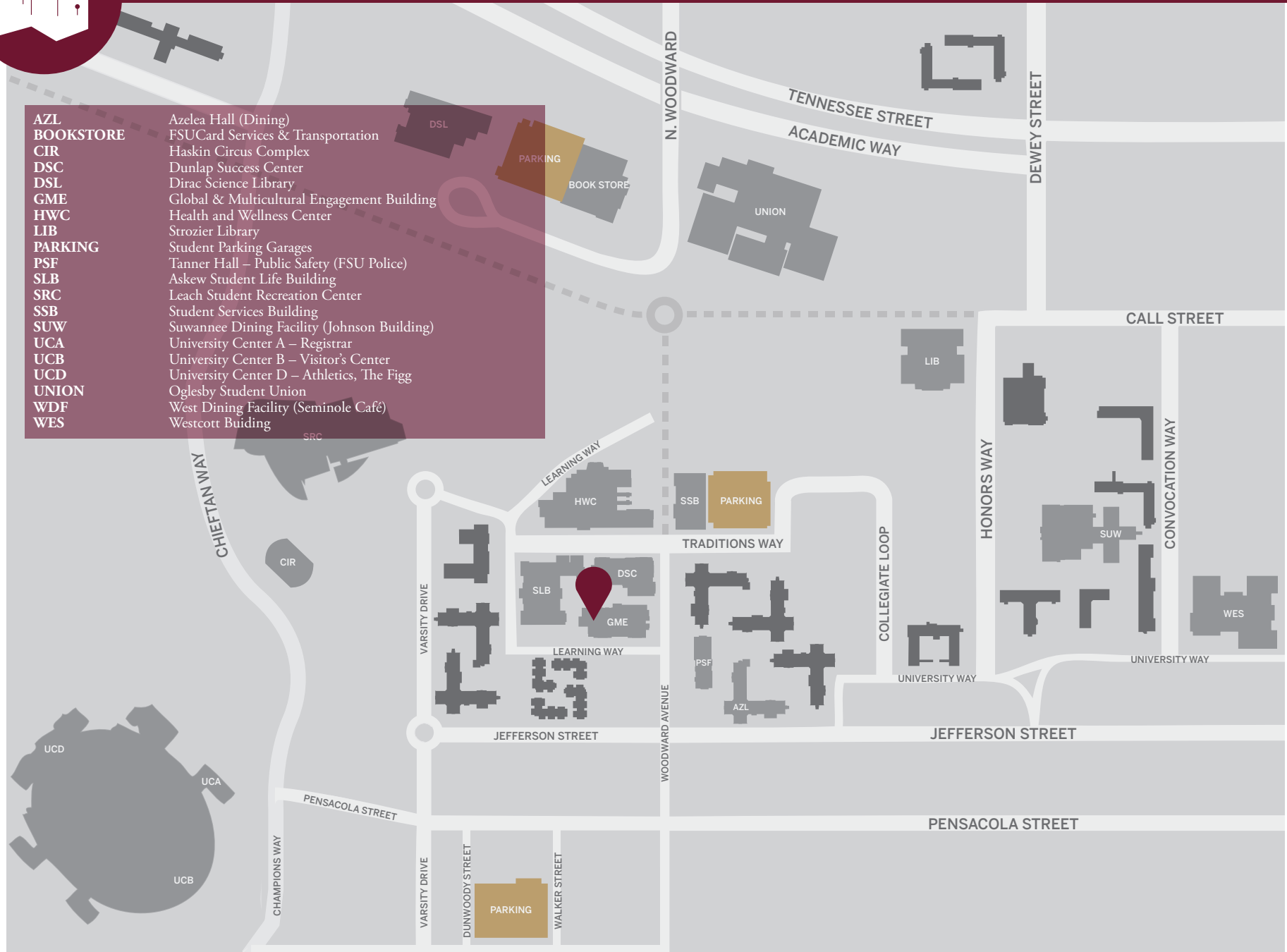
The Lending Closet is available to all FSU international students who would like to borrow or donate household items. It is located in the second floor immigration advising suite.



campus map

AZL
BOOKSTORE
CIR
DSC
DSL
GME
HWC
LIB
PARKING
PSF
SLB
SRC
SSB
SUW
UCA
UCB
UCD
UNION
WDF
WES

Azelea Hall (Dining)
FSU Card Services & Transportation
Haskin Circus Complex
Dunlap Success Center
Dirac Science Library
Global & Multicultural Engagement Building
Health and Wellness Center
Strozier Library
Student Parking Garages
Tanner Hall – Public Safety (FSU Police)
Askew Student Life Building
Leach Student Recreation Center
Student Services Building
Suwannee Dining Facility (Johnson Building)
University Center A – Registrar
University Center B – Visitor's Center
University Center D – Athletics, The Figg
Oglesby Student Union
West Dining Facility (Seminole Café)
Westcott Building





Stay in touch with us during your time at FSU.

Pay attention to immigration updates and reminders that your immigration advisors send via email and through Blackboard. Also look for CGE e-newsletters with information on upcoming events and programs.

Social media is another great way to become part of our CGE community. Keep up-to-date with the latest announcements, see photos from our events, and share posts with your friends.

You can post questions and connect with other new international students on our New to FSU International Students Facebook page: [*facebook.com/NewFSUInternational*](https://facebook.com/NewFSUInternational). “Like” the Center for Global Engagement’s main Facebook page and follow us on social media.



Still have questions?

If you have general questions about campus and Tallahassee, look for student ambassadors at the table in the lobby outside the CGE’s International Student & Scholar Services (ISSS) office or ask the assistant at the ISSS front desk.

